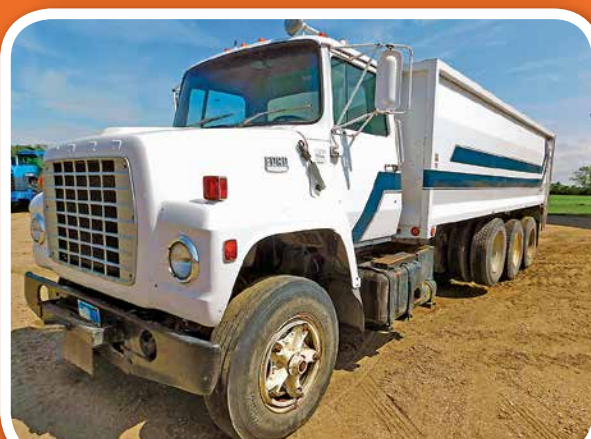


# Farm Retirement AUCTION

Location: 7745 168 Ave SE, Mooreton, ND 58061.  
From Mooreton, ND, .5 miles north on County Road 1,  
1 mile west on 78th Street, .5 miles north on 168th Avenue.

## WEDNESDAY, JULY 18 | 10AM 2018



**AUCTIONEER'S NOTE:** Major equipment begins selling at 10:30 AM. Live online bidding available on major equipment. Registration, terms, & details at [SteffesGroup.com](http://SteffesGroup.com).

### TRACTORS

**1980 John Deere 8440**, quad range, 3 hyd., 1000 PTO, 20.8-34 duals, shows 2,571 hrs., S/N002267R  
**New Holland 9682**, 12 spd. Quadra-Sync, 4 hyd., John Deere ATU, (57) rear suitcase weights, (7) front suitcase weights, 520/85R42 duals, 6,747 hrs., S/ND106572  
**1986 John Deere 4850**, MFWD, powershift, 3 hyd., 3 pt., quick hitch, large 1000 PTO, (14) suitcase weights, 14.9R30 front tires, 380/90R40 rear duals, 6,880 hrs., S/NRW4850P010431  
**1998 John Deere 8300**, powershift, 4 hyd., 3 pt., 1000 PTO, John Deere ATU, (12) suitcase weights, 14.9R30 front duals, 380/90R46 rear duals, 4,929 hrs., S/NRW8300P021608  
**1982 John Deere 4440**, quad range, 3 hyd., 3 pt., quick hitch, 540/1000 PTO, front-mount fuel tank, (8) front suitcase weights, 10:00-16SL front tires, 14.9R46 rear duals, shows 3,079 hrs., S/NH4400R056417RW  
**1974 John Deere 4230**, powershift, 3 hyd., 3 pt., 540 PTO, Nuway loader, 11L-15 front tires, 14.9-38 rear tires, 2,989 hrs., S/NC16311R

### GPS EQUIPMENT

**John Deere StarFire ITC**, SF1, 4,697 hrs., S/NPCGT01C551153  
**John Deere brown box**, AutoTrac, 5,094 hrs., S/N145058

### HARVEST EQUIPMENT

**2005 John Deere 9760**, STS, PRWD, Contour-Master, 3 spd., fixed feeder house, 24' unloading auger, Big Top hopper, fine cut chopper, 2,207 sep. hrs., 3,015 engine hrs., 18.4-30 tires, 2,207 sep. hrs., 3,015 engine hrs., S/NH09760S711894  
**2011 John Deere 630F flex head**, 30', fore/aft, finger reel, stubble lights, Cray air reel, S/N1H00630FCB0741725, New fingers on reel  
**2006 Geringhoff RD1200B corn head**, 12x22", poly snouts, S/N9198612222B  
**Clarke Machine conversion corn head**, 12x22", poly snouts, cob saver

### GRAIN CART

**Brent GC672 grain cart**, 14" folding auger, 1000 PTO, S/NB1581192  
**Brent 874 grain cart**, hyd. folding 16" auger, manual roll tarp, scale, 1000 PTO, 30.5L-32 single tires, S/NB17540106

### DRILLS

**John Deere 9300 drill**, 30', single compartment seed boxes, folding markers

### PLANTERS

**Wil-Rich PT-2200 vacuum planter**, 24x22", MaxEmerge Plus units, 3 bu. hoppers,

### PLANTERS

rubber closing wheels, ground drive, trash whippers, 400 gal. fertilizer tank, John Deere 250 monitor, folding markers  
**John Deere 7300 planter**, 12x22", 3 pt., 1.6 bu. hoppers w/ext., ground drive, rubber closing wheels, insecticide boxes, Dawn trash whippers, folding markers

### TILLAGE EQUIPMENT

**Case-IH TigerMate 200 field cultivator**, 43-1/2', floating hitch, 6" spacing, 5-section, walking tandems across, knock-on shovels, 4-bar harrow, rear hitch & hyd., S/NYDD065434  
**Brillion Land Commander II ripper**, 18', 9 shank, 25" spacing, 20" discs, walking tandems  
**Disc chisel**, 16', walking tandems  
**Wil-Rich chisel plow**, 25', walking tandems, 3-bar harrow, rear hitch  
**IHC 490 disc**, 34', scrapers, 20" discs, rear hitch  
**Krause 3100 Landsman**, 34', walking tandems, 5-bar harrow, rear hitch  
**Crumbler**, 45', rolling baskets, 19" discs  
**Wil-Rich cultivator**, 33', knock-on shovels, rear hitch  
**S-tine cultivator**, 25', 3 pt.  
**S-tine cultivator**, 24', 3 pt.  
**John Deere 3100 plow**, 4x18"  
**John Deere 3100 plow**, 6x18"  
**Melroe harrow**, 40', 5-bar  
**Melroe harrow**, 40', S-tines, 5-bar  
**Harrow**, 35', 5-bar  
**Melroe 452 S-tine harrow**, 36', 5-bar

### SEMI TRACTORS & TRUCKS

**1998 Volvo tandem axle**, day cab, M11 Cummins, Eaton 10 spd., engine brake, air ride, air slide 5th, diff lock, wet kit, mud scrapers, 295/75R22.5 tires on aluminum rims, 692,620 miles  
**1995 White GMC tandem axle**, integral sleeper, recon M11 Cummins, Eaton Fuller 9 spd., engine brake, air ride, air slide 5th, cruise, diff lock, wet kit, mud scrapers, 295/75R22.5 tires on aluminum, 857,088 miles  
**1992 White GMC tandem axle**, integral sleeper, 60 Series Detroit, Eaton Fuller 9 spd., air ride, air slide 5th, cruise, diff lock, wet kit, shows 23,489 miles  
**1974 Ford 9000 tri-axle**, Detroit diesel, 5&2 spd., pusher axle, 22' box, walking tandems, 11R22.5 tires on steel rims, 280,185 miles  
**1970 Chevrolet C50 single axle**, 4&2 spd., 14' box, PTO, 9:00-20 tires, shows 42,418 miles

### TRAILERS

**2011 Loadline tandem axle end dump**, 34', roll tarp, spring ride, mud scrapers, 11R22.5 tires on steel rims

### TRAILERS

**1997 Trinity tandem axle live bottom trailer**, 42', 35" belt, spring ride, 11R24.5 tires  
**Frontier tandem axle hopper bottom**, 38'x96", roll tarp, spring ride, 24.5 tires on steel rims  
**Tandem axle flatbed trailer**, 31', wood deck, walking tandem axle, spring ride, 11:00R20 tires on steel rims

### SUGARBEET EQUIPMENT

**Red River 622 sugarbeet harvester**, 6 row, 1000 PTO  
**Alloway defoliator**, 22', 1000 PTO, rubber flails  
**Alloway defoliator**, 11', rubber flails, 1000 PTO

### ROW CROP EQUIPMENT

**Alloway flail shredder**, 22', metal flails, S/N17846  
**Rotary hoe**, 22', 3 pt.  
**H&S band sprayer**, 44', 6" spacing, 500 gal. tank

### SPRAYER

**Summers SuperSprayer pull-type sprayer**, 2 pt., 66', 500 gal. tank, triple nozzle bodies  
**Mix cone**

### SEED TENDER & GRAIN HANDLING EQUIPMENT

**Conveyall BTS240 seed tender**, swing conveyor, 10" belt, roll tarp, Honda 5.5 hp. motor, on shop-built single axle trailer, wood deck  
**Farm King 1272 auger**, 72'x12", swing auger, hyd. lift, 540 PTO  
**Wheatheart SA1061 auger**, 61'x10", swing auger, hyd. lift, 540 PTO  
**Wheatheart BH836 loadout auger**, 36'x8", 5 hp. electric, 1 phase, S/N5401  
**Westfield W80 hyd. loadout auger**, 34'x8" Westfield auger, for parts

### OTHER EQUIPMENT & FARM SUPPORT ITEMS

**Miskin pull-type scraper**, 8'x5.5'x3'  
**Shop-built blade**, 14', 3 pt.  
**John Deere CX15 batwing mower**, chain guards, 1000 PTO  
**John Deere 150 batwing mower**, 15', wing fold, chain guards, 540 PTO  
**Soucy combine tracks**, 32" wide  
**520/85R42 combine duals**  
**(2) 1,500 gal. poly tanks**  
**Asst. 2" hose**

**SteffesGroup.com**

**STEVE BREUER / 701.640.1292**  
or Justin Ruth at Steffes Group, 701.237.9173 or 701.630.5583

